

## CHAPTER – 5

### Body Movements

#### Q. 1

Fill in the blanks:

- Joints of the bones help in the \_\_\_\_\_ of the body.
- A combination of bones and cartilages forms the \_\_\_\_\_ of the body.
- The bones at the elbow are joined by a \_\_\_\_\_ joint.
- The contraction of \_\_\_\_\_ pulls the bones during movement.

Answer:

- movement, b. skeleton, c. hinge, d. muscles.

#### Q. 2

Indicate true (T) and false (F) among the following sentences:

- The movement and locomotion of all animals is exactly the same. ( )
- The cartilages are harder than bones. ( )
- The finger bones do not have joints. ( )
- The fore arm has two bones. ( )
- Cockroaches have an outer skeleton. ( )

Answer:

- a. False, The movement and locomotion of all animals vary.
- b. False, Cartilages are not harder than bones.
- c. False, Finger bones have joints.
- d. True, the fore arm has two bones, i.e., radius and ulna.
- e. True, the body of cockroach is covered with a hard outer skeleton.

### Q. 3

Match the items in Column I with one or more items of Column II:

Column I	Column II
Upper jaw	Have fins on the body
Fish	Has an outer skeleton,
Ribs	Can fly in the air
Snail	Is an immovable joint
Cockroach	Protect the heart Shows very slow movement Have a streamlined body

Answer:

- i. Upper jaw—is an immovable joint.
- ii. Fish—have fins on the body, have a streamlined body.
- iii. Ribs—protect the heart.
- iv. Snail—shows very slow movement.
- v. Cockroach—has an outer skeleton, can fly in air.

#### Q. 4

Answer the following:

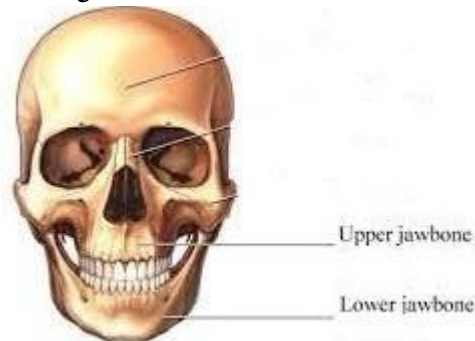
- a. What is a ball and socket joint?
- b. Which of the skull bones are movable?
- c. Why can our elbow not move backwards?

Answer:

- a. A kind of joint in which the rounded end of one bone fits into the cavity (hollow space) of the other bone is called ball and socket joint. It allows movements in all directions.



b. In the skull, only lower jaw is movable apart from that the upper jaw is fixed joint which cannot move.



c. Our elbow

cannot move

backwards

because it has

hinge joint which allows movement in only one direction that is back

and forth.

